

11.4.20 (17)

Preorbital edema ↑

E	D	max	min
I.			
L.	100	80	

(BP →
HR → (100 ~~100~~))

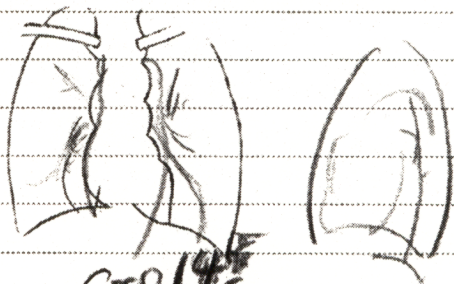
Rp do 20T

(~~100~~ 100 ~~100~~ 100 ~~100~~ 100 Rp) 7 2 7 2 5 T
5 T.

PR 28 x 4 mm

Chit: apical SM ⊕

(17)



CTR 145
/ 23.5